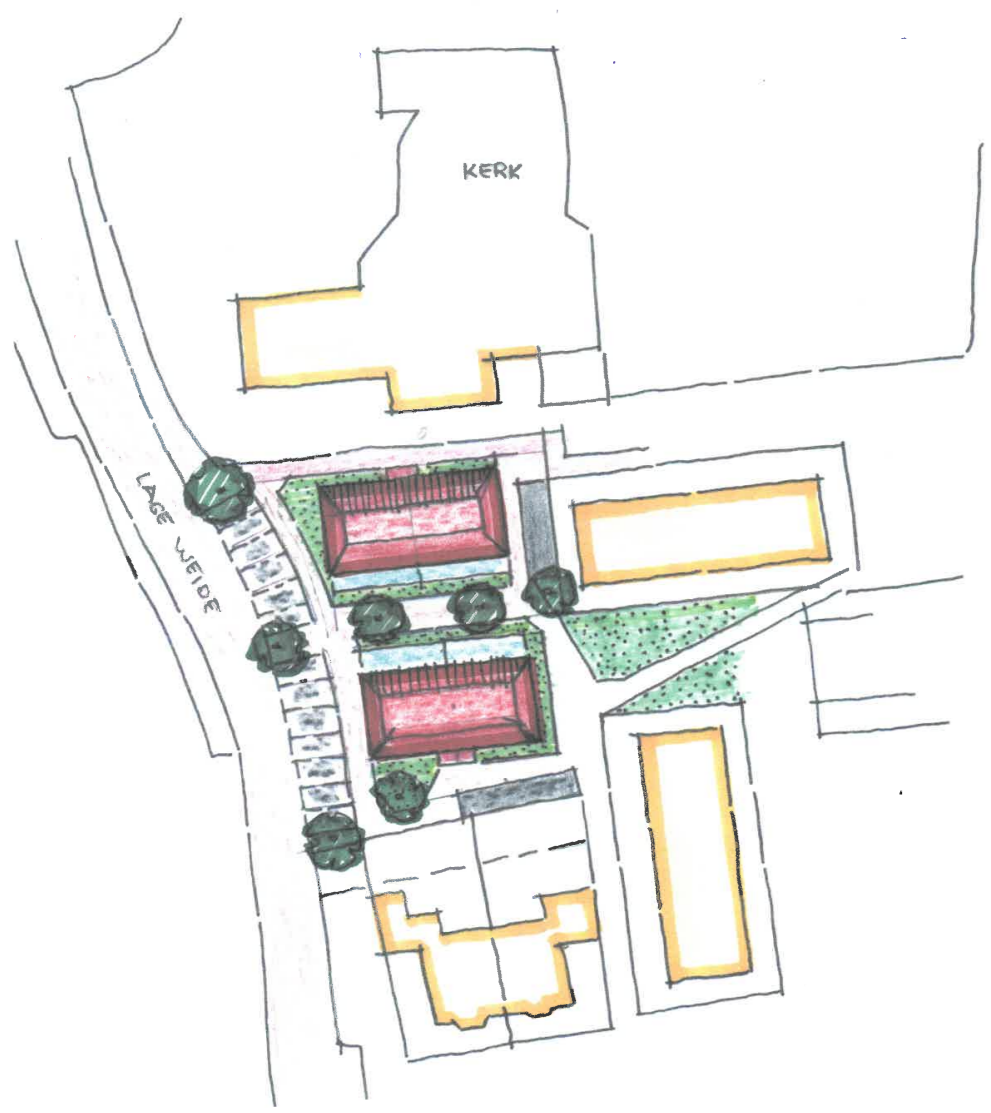
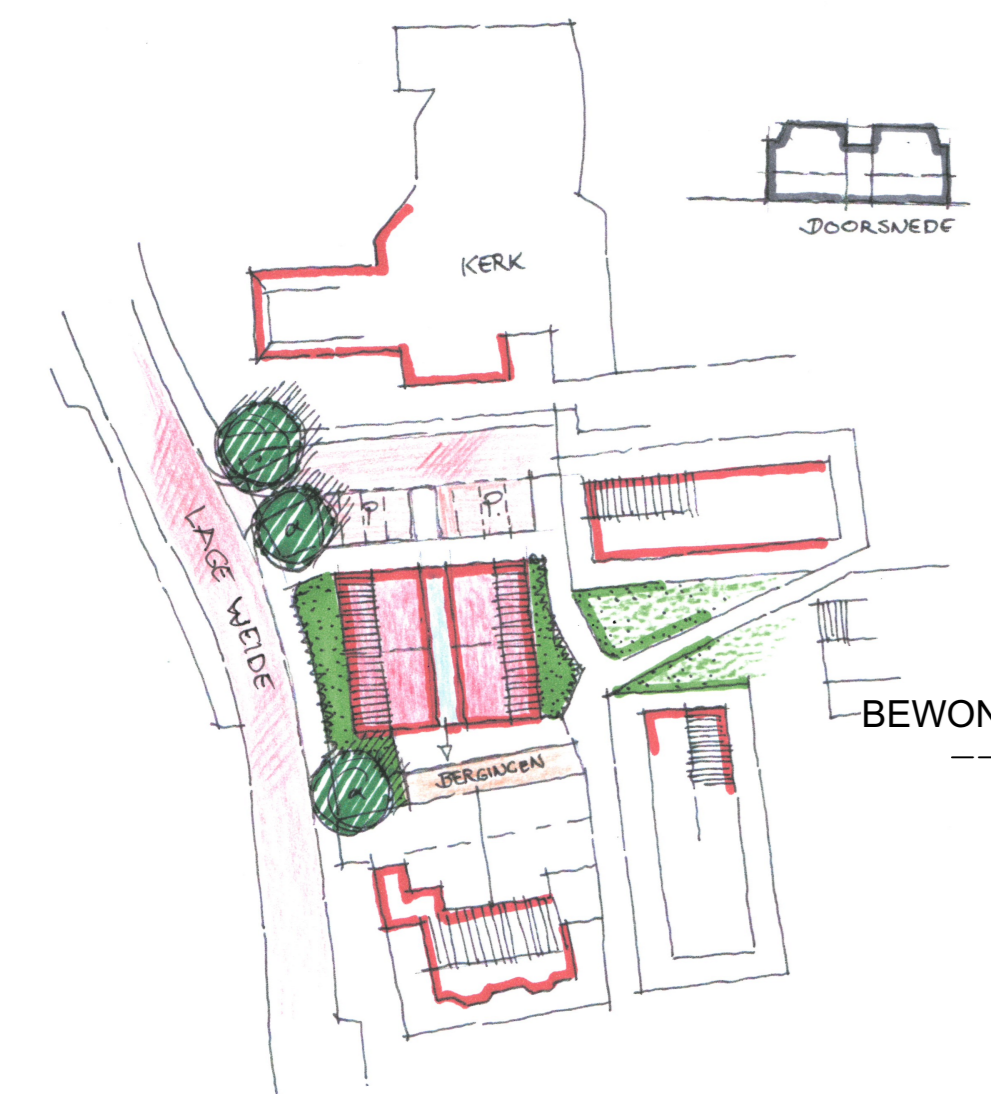


9 Appartementen "In de Pastoretuin" te Hoonhorst



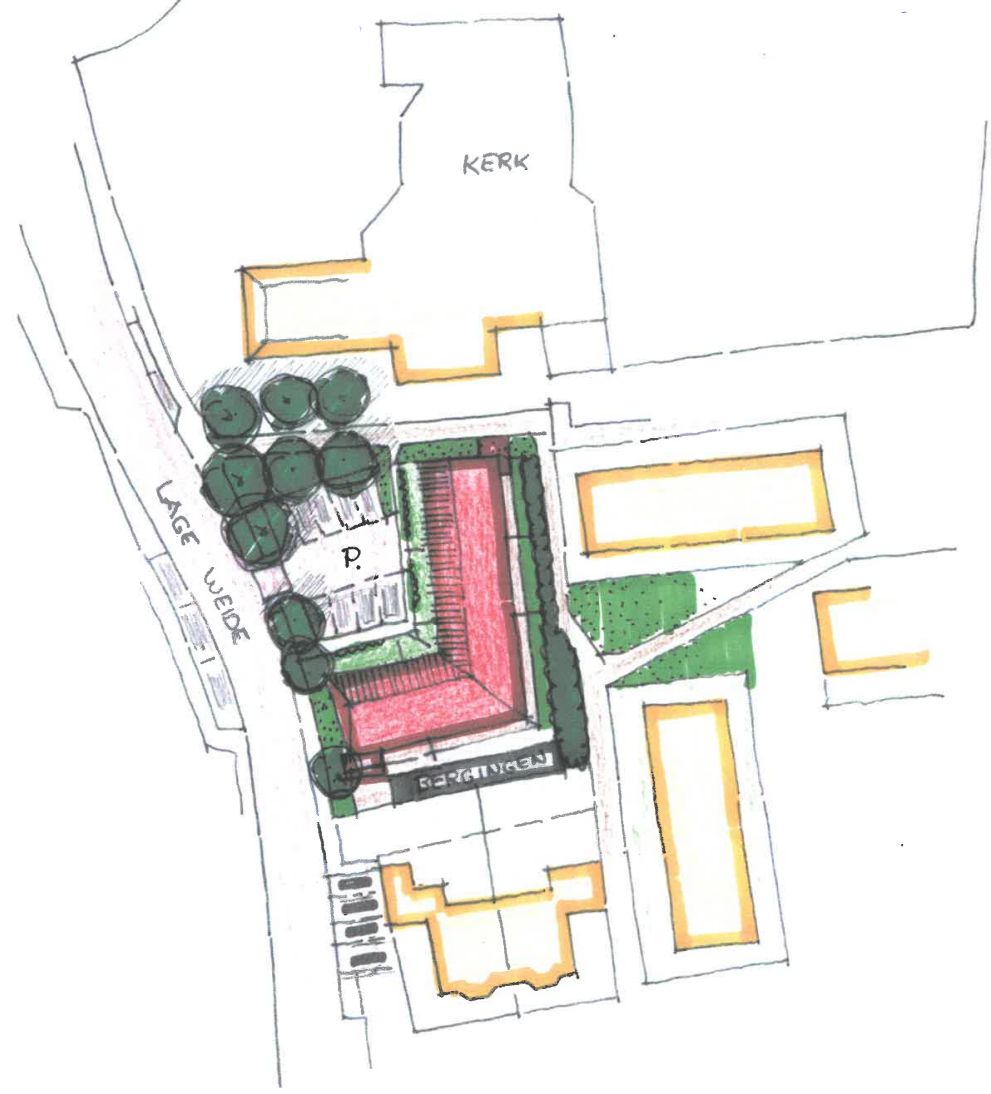
VARIANT A

september 2019



VARIANT B

september 2019

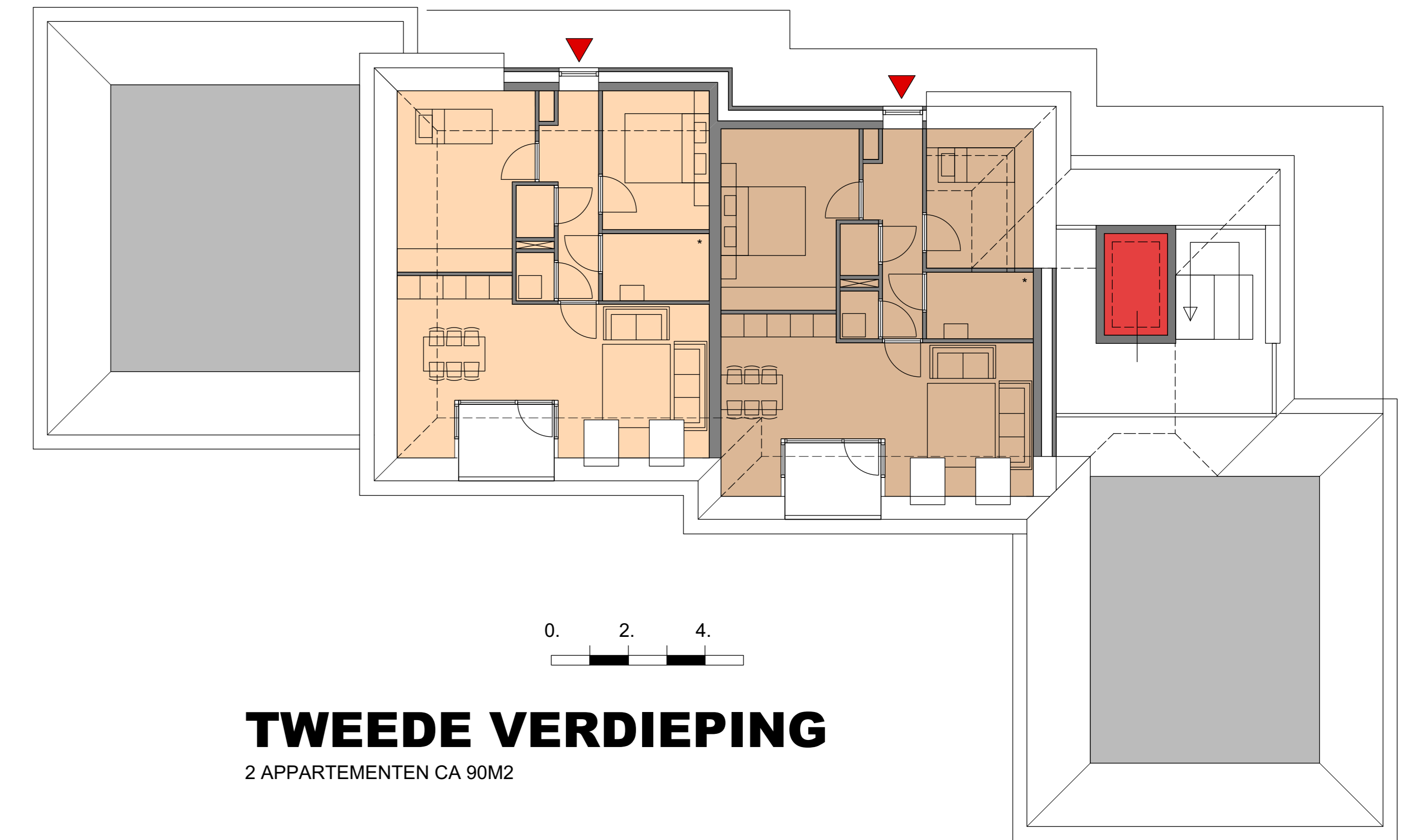
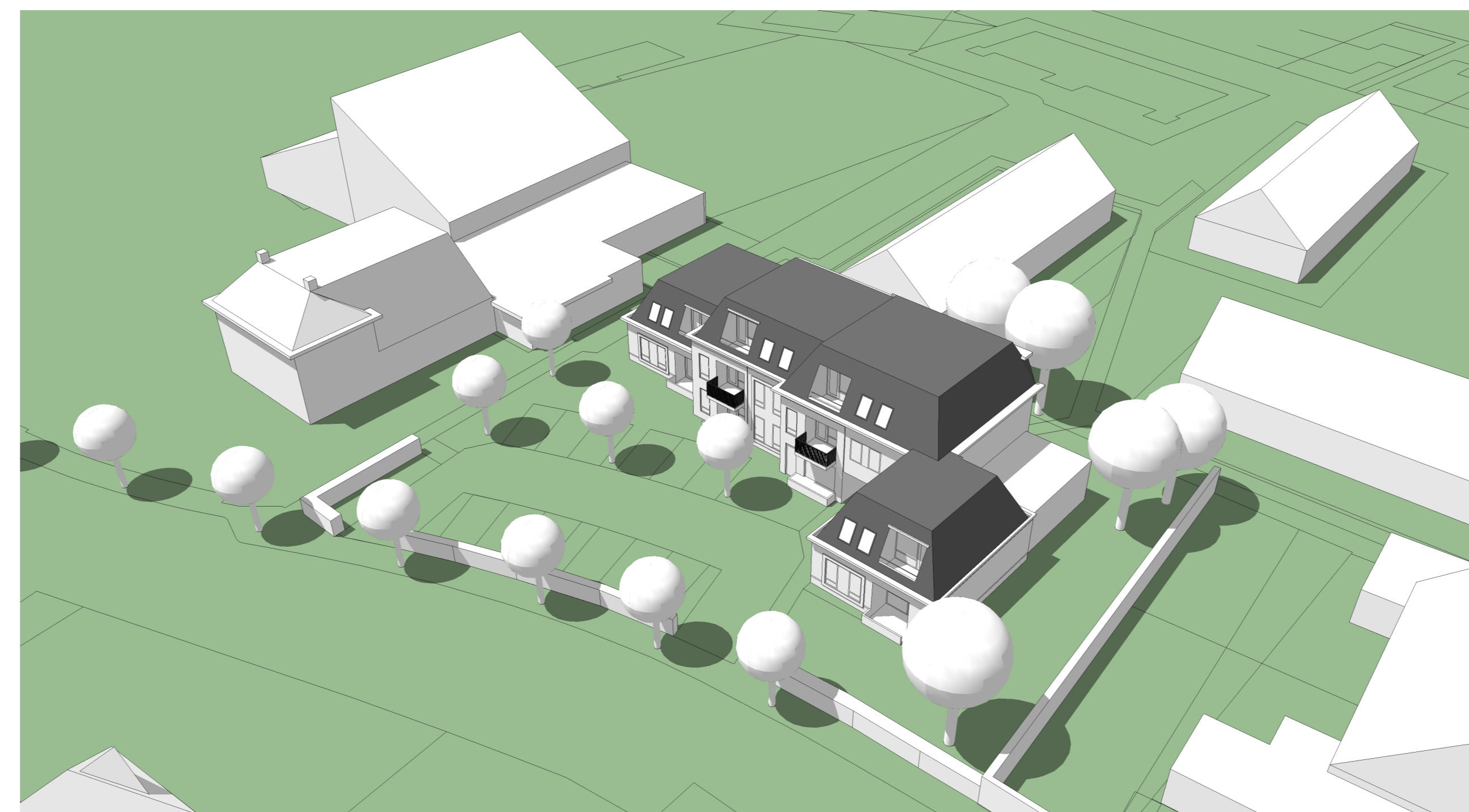
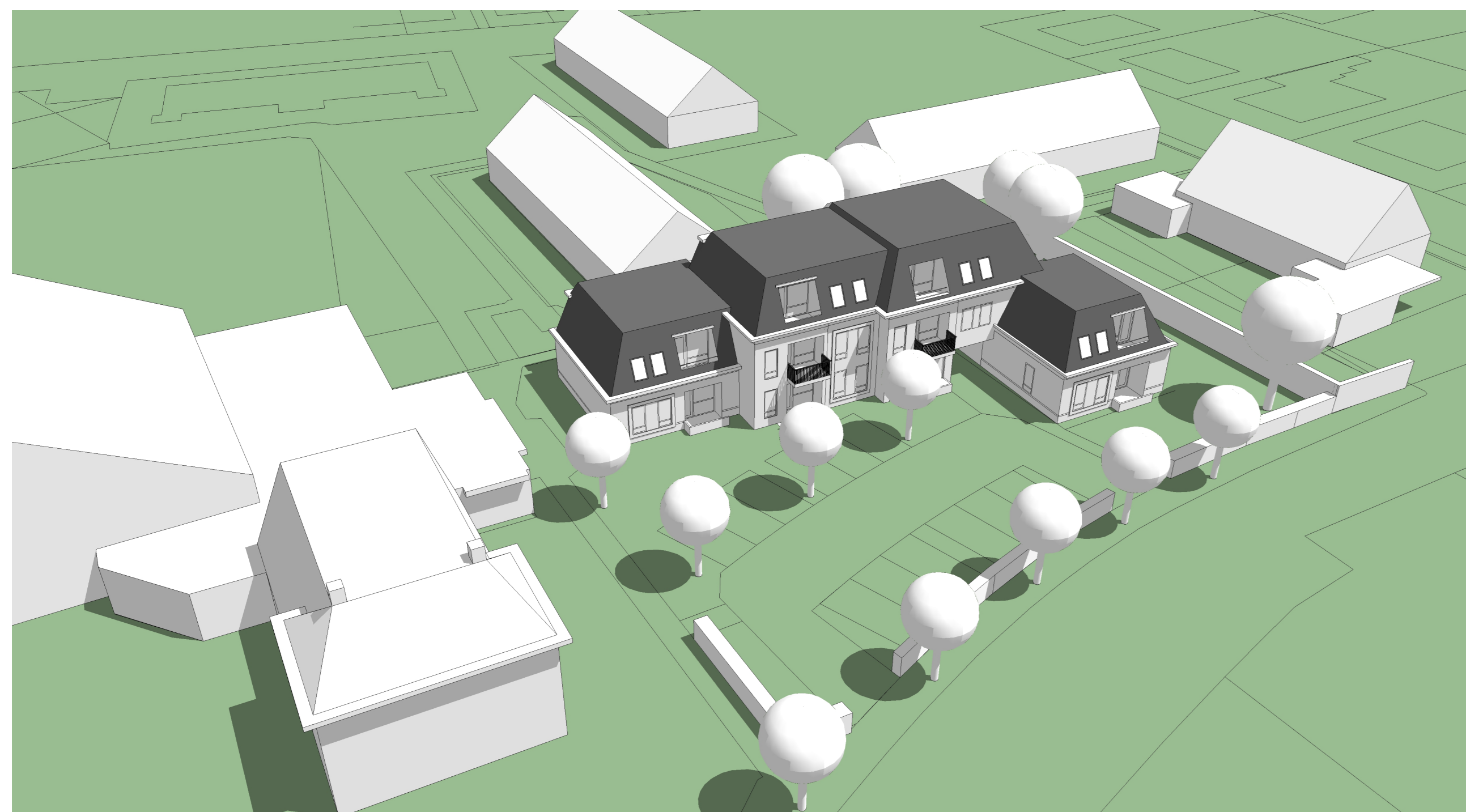


VARIANT C

september 2019

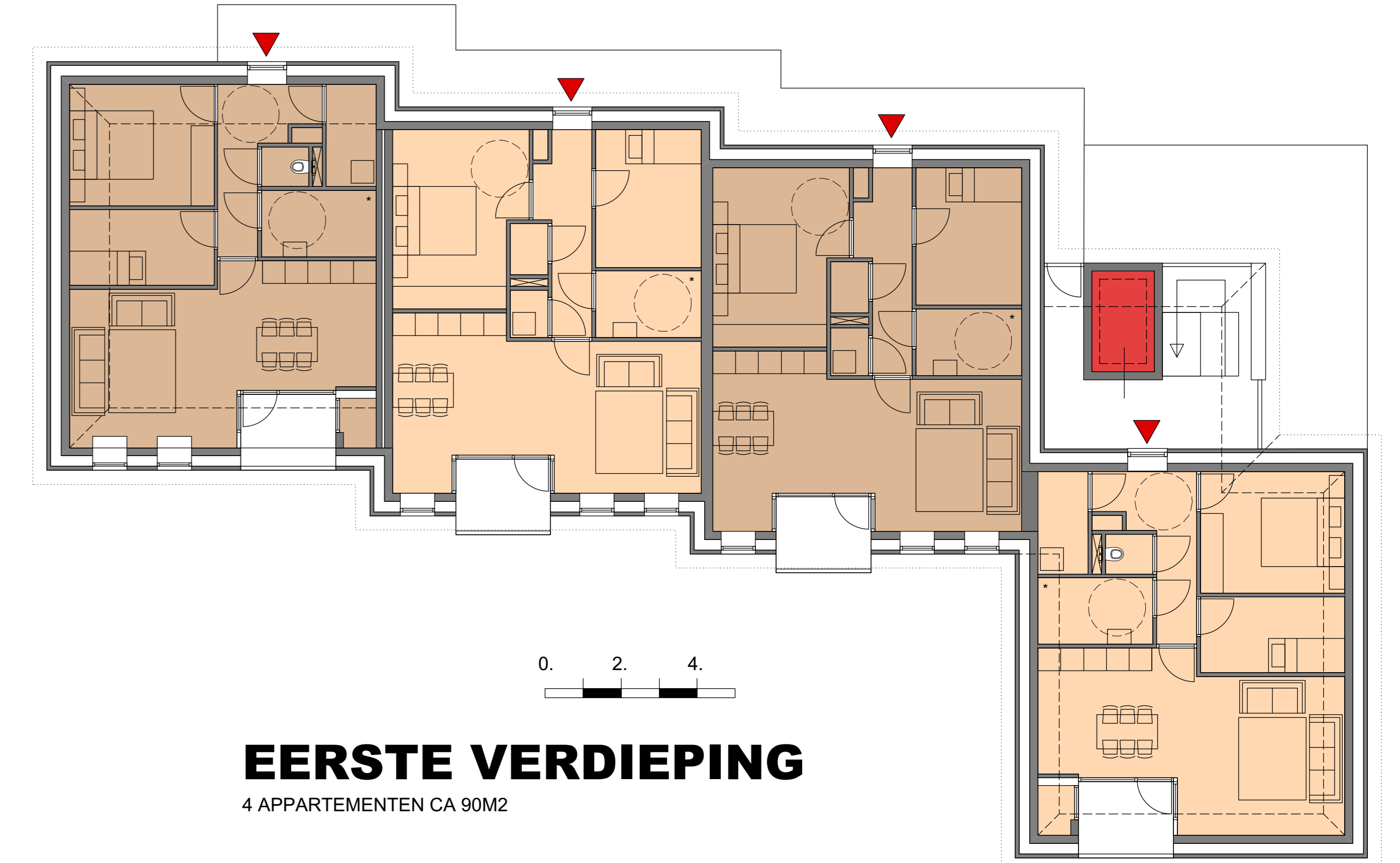


SITUATIE



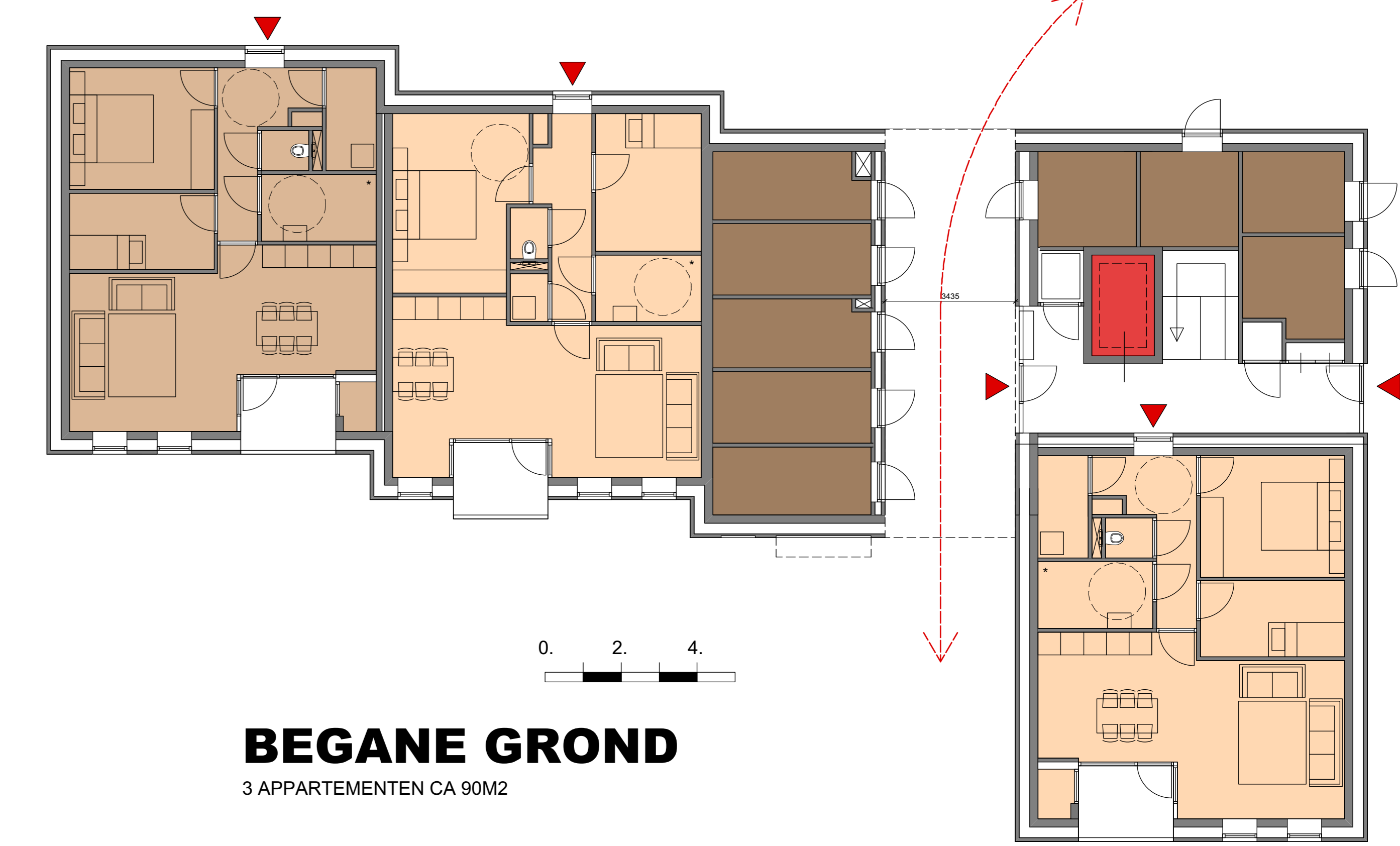
TWEDE VERDIEPING

2 APPARTEMENTEN CA 90M2



EERSTE VERDIEPING

4 APPARTEMENTEN CA 90M2



BEGANE GROND

3 APPARTEMENTEN CA 90M2



niek van loon
Stedenbouwkundig ontwerp en advies

